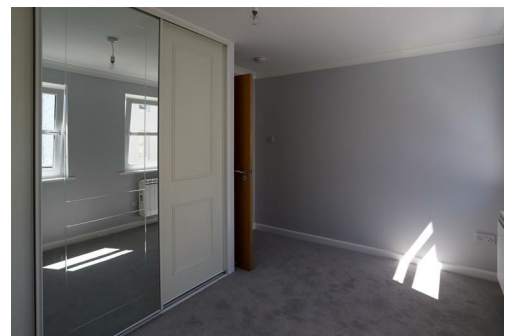
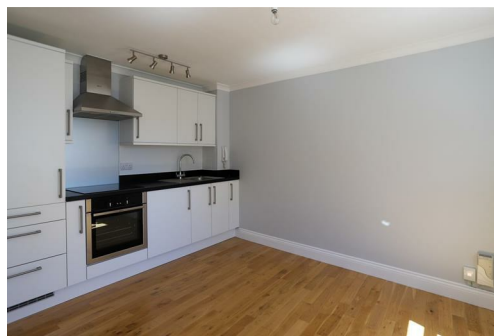




**15 Simon Place, St Helier, Jersey, JE2 4SB**  
**£1,180**

This modern purpose built one bedroom apartment is conveniently located in a quiet town location with an easy walk into work. This bright apartment is on the first floor with ample natural daylight and a modern and tasteful finish. It is available from early May and also has the added benefit of a private parking space. This is a lease re-assignment and the rent will be due an RPI increase on 1st November. Regret, no pets. Qualified.



**VIEWING**

Please call Slomans, Sole Agents on 87 97 87. Please note that all areas and measurements given in these particulars are approximate and rounded. The text, photographs and floor plans are for general guidance only.

