

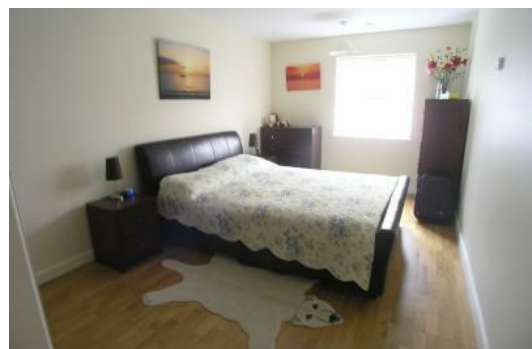
Slomans Estate Agents.
14 La Colomberie, St Helier,
Jersey JE2 4QB
T: 01534 879787
E: sales@slomans.co.uk

Slomans.



Century Buildings, The Esplanade, St Helier, Jersey, JE2 3AD £1,100

A spacious one bedroom apartment in modern development. Finished to the highest standards throughout with under-floor heating and thermostatic controls in all rooms. Wood flooring and high spec fully fitted and aplianced kitchen. Large living/dining room. The apartment is conveniently located with easy access to town and the waterfront. Available early February to rent on a part-furnished basis. QUALIFIED.



Reception 31'2"x14'5" (9.50x4.39)

A spacious open plan kitchen/living room with plenty room for a dining table.

Kitchen 8'5"x10'6" (2.57x3.20)

Fully fitted kitchen with integrated appliances.

Bedroom 1 16'3"x9'8" (4.95x2.95)

A double bedroom with fitted cupboards and drawers.

Bathroom

Bathroom comprises white bath with shower over, WC and WHB. Tiled flooring.

